



Evidence Eraser Series: SATA/IDE Hard Disk Eraser

TP100

7.2GB/min
Maximum Speed

Using data overwrite in erase mode had been proven safe and effective method to prevent the risk of data retrieval by others. The HDD is cleaned and can safely be discarded or recycled.

TP series eraser allows all business to seek an economic way to perform the safest hard drive cleaning and recycling work. There are 9 types of erase mode that can provide various application levels, from general, corporate, banking and military use.

Features

9 Erase modes

① Quick Erase, ② Full Erase, ③ DoD Erase (DoD5220.22-M), ④ 3-Pass Erase (CSEC ITSG-06), ⑤ HMG Enhanced (IS 5), ⑥ 7-Pass Erase (VSITR), ⑦ Custom Erase, ⑧ Secure Erase, ⑨ Enhanced Secure Erase

Invisible Confirm Mark

After checking HDD info, it can display whether the HDD has been processed erase tasks or not.

Export all log reports

Export all log report via PC or HDD, including HDD serial number, processing tasks, time and results.



Support SATA/IDE HDD and SSD

Export all log report via PC or HDD, including HDD serial number, processing tasks, time and results.




Easy To Use

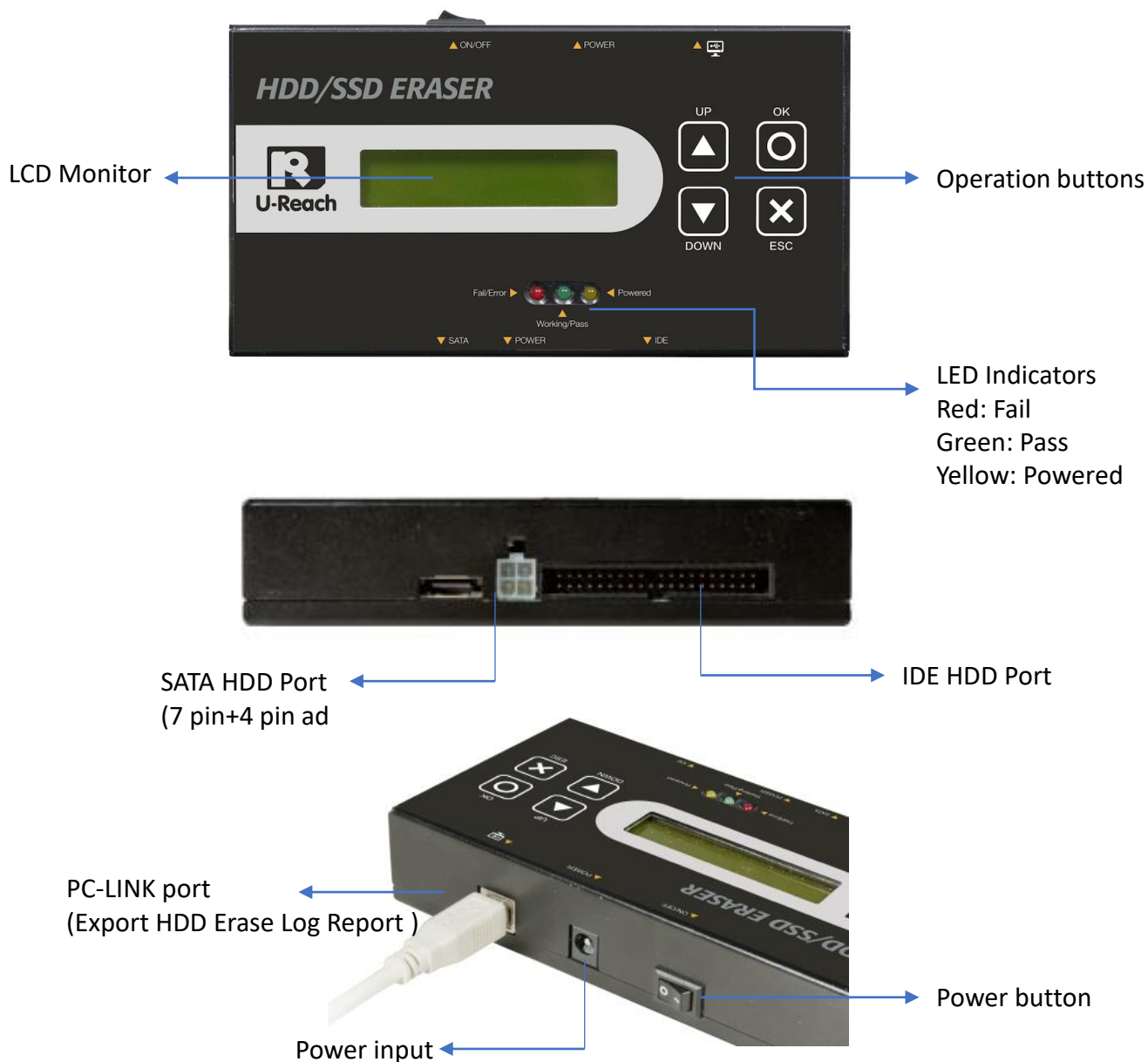
The simplest operation, no need to pass through the computer, nor need to install any software.



Product Models

Photos	Model No.	Erase Port	Product Dimensions	Package Weight
	TP100	1	15 x 8 x 3 cm	0.45 Kg

Product View



Specifications

Name	TP Evidence Eraser
Model	TP100
Port	Single port erasing
Maximum speed	7.2 GB/min (120MB/sec) *(Actual performance would depend on HDD quality)
Erase Function	Quick Erase, Full Erase, DoD Erase(DoD5220.22-M), 3-Pass Erase(CSEC ITSG-06, HMG Enhanced IS 5), 7-Pass Erase(VSITR), Custom Erase, Secure Erase, Enhanced Secure Erase
Connector	SATA-HDD, IDE-HDD, HDD power port
Interface	2.5"/3.5" SATA 1.0/2.0/3.0 HDD, SSD, IDE HDD
Display	2x20 backlight Monochrome LCD display
LED status	LED light: Red(Fail)/Green(Pass)/Yellow(Powering) on each slot
Control key	4 types of keys: ▲/UP, ▼/DOWN, ○/OK, X/ESC
Operating type	Stand-alone operation, Output log via PC and HDD
Eraser Language	English
Power Supply	HDD auto power control
	Adjustable voltage 100V-240V, 50/60Hz
	12V / 5A
Temperature	Working: 5°C ~45°C ; Storage-20°C ~85°C
Humidity	Working: 20%~80%; Storage: 5%~95%
Certification	CE, FCC, RoHS
Size	15(L) x 8(W) x 3(H) cm
Weight	450 g

***Specifications are subject to change without further notice.