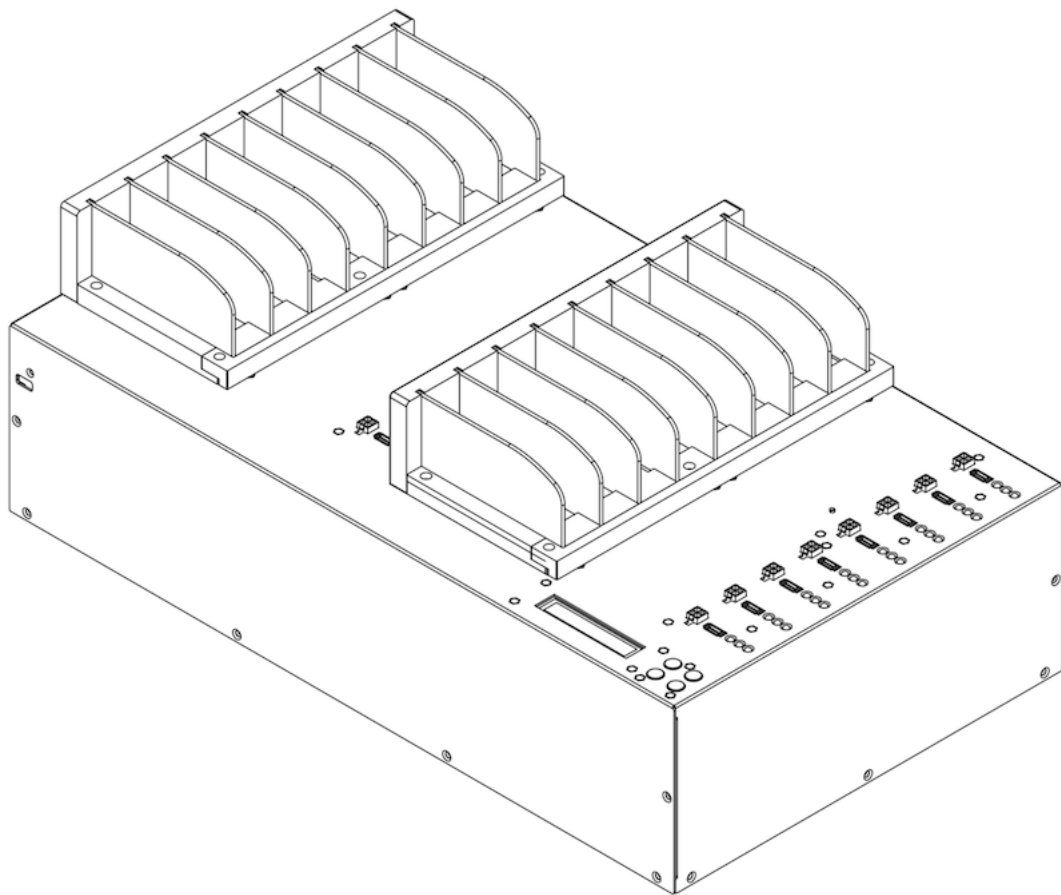




# MT/MTC Series

## IDE/SATA Duplicator and Sanitizer

User Manual  
v A.04



# Index Table

MT/MTCV vA.04

Product Disclaimer .....	3
Warranty .....	3
Piracy Statement .....	3
Before You Start .....	4
Notice Symbols .....	4
Functions Table .....	5
Hardware Overview .....	9
Functions.....	12
<b>1. Copy</b> .....	12
<b>2. Compare</b> .....	13
<b>3. Copy+Compare</b> .....	13
<b>4. Erase</b> .....	13
<b>5. Utility</b> .....	15
<b>6. Setup</b> .....	17
<b>7. Log Manager</b> .....	26
<b>Real time PC-Monitoring</b> .....	30
<b>Using the PC-Monitoring Feature</b> .....	31

## **Product Disclaimer**

U-Reach is not accountable for any incidental or consequential damages, including, but not limited to property harm, loss of time or data from use of any U-Reach products or any other damages attributable to product malfunction or failure of including without limitation, those attributed to reliance of the materials provided, costs of product replacement, loss of use, data or profits, delays or business interruptions, any principle of legal responsibility arising from or in reference to the use, overall performance, delays in servicing, or lack of ability to render service of any U-Reach product. U-Reach makes every effort to ensure proper function of all products. However, the customer is responsible to verify that the output of U-Reach product meets the customer's quality requirement. The customer further acknowledges that improper use of U-Reach products, software program, and/or hardware issues can cause loss of data, defective formatting, or unreliable data loading. U-Reach will make efforts to resolve or repair any issues recognized by customer either within the warranty period or on a time and materials basis.

Specifications and features are subject to change without notice or obligation.

## **Warranty**

U-Reach provides a basic one-year parts and labor warranty for all its products, excluding cables, adapters, and other consumable items. An extended warranty may be purchased. Telephone and email support is available for the life of the product as defined by U-Reach.

All warranties are specific to market region and will be defined per market region in which the product was purchased.

## **Piracy Statement**

U-Reach accepts no responsibility for copyright infringement or misuse of any U-Reach equipment. Copying any form of data (audio, video, or software) without the permission of the copyright holder is illegal. It is the sole responsibility of the user to ensure that the legal copyrights of the copyright owners are respected.

# Before You Start

## Important Notice

- Carefully read the entire manual before operating.
- Make sure the source device is correct and functioning.
- Equal capacity of source and target is recommended for guaranteed data consistency.
- Using the Copy +Compare function provides the most flawless duplication.
- Damage incurred due to non-compliance with our operating instructions will void the warranty.
- Store the equipment safely when not in use and keep out of the reach of children.
- Please turn off duplicator before replacing the socket.
- Never turn off the power while the firmware updating.
- Use only approved, stable power sources.
- The power supply has overload protection. When it is overloaded and shutdown, please unplug the power cord for 2 minutes for discharge.
- Use product only in a clean, dry, dust free, and ventilated area. Liquids or foreign debris can severely damage your duplicator.
- It is typical for the machine to heat up during operation.
- While in use, do not move the duplicator or remove HDDs.
- Static electricity may cause duplication error. Please pay attention to the duplicator's environment and while operating equipment. Purchasing electricity elimination equipment helps avoid shock.
- Devices will operate at high temperatures during selected tasks.
- Wear protective gloves to prevent burns when handling devices.
- Ensure machine and operator are properly grounded to prevent ESD.

## Notice Symbols

Special items, procedures, or notes to be observed prior to use.

### Note

Refers to related duplicator operations, special details, tips, or suggestions for operational effectiveness.

### Caution

Refers to procedures that need to be adhered to or precautions.

# Functions Table

Functions	Descriptions
<b>1. Copy</b>	Copies data from source device to targets. (There are four copy modes in function "6.2 Copy Area")
<b>2. Compare</b>	Compares the source and targets to ensure copy accuracy.
<b>3. Copy +Compare</b>	Automatically launches compare function after copy is completed.
<b>4. Erase</b>	<b>4.1 Quick Erase</b> Erases device(s)' index table.
	<b>4.2 Full Erase</b> Erases entire device(s), complying with NIST 800-88 Standards.
	<b>4.3 DoD Erase</b> Erases device(s), complying with DoD 5220.22-M Standards.
	<b>4.4 DoD EraseComp</b> Erases device(s), complying with DoD 5220.22-M Standards and verifies complete erasure.
	<b>4.5 7-Pass Erase</b> Erases device(s) 7 times complying with DoD 5220.22-M(ECE) Standards.
	<b>4.6 Secure Erase</b> Erases the non-loadable areas complying with NIST 800-88 Standards.
	<b>4.7 Enhanced Secure Erase</b> Erases devices that support this feature.
	<b>4.8 US Army AR 380-19</b> Erases device(s) complying with "Army Regulation 380-19" by the US Army.
<b>5. Utility</b>	<b>5.1 Show Device Info.</b> Displays basic information such as device model, name, capacity, etc.
	<b>5.2 Update System</b>

	Updates system firmware by any device at the source port or through the USB port.						
	<p><b>5.3 System Info.</b> Displays system information such as controller, model number, software version, etc.</p>						
	<p><b>5.4 Verify HDD</b> Scans device for any bad sectors by reading and writing.</p>						
	<p><b>5.5 Strict Verify HDD</b> Scans device for any bad sectors by reading and writing two times.</p>						
<b>6. Setup</b>	<p><b>6.1 Start-up Menu</b> Sets default function to display during equipment initialization.</p>						
	<table border="1"> <tr> <td rowspan="5"><b>6.2 Copy Area</b></td> <td> <p><b>System and Files</b> Copies data and skips empty space. Only supports standard formats.</p> </td> </tr> <tr> <td> <p><b>ALL Partitions</b> Copies all partitions and data, unallocated partitions not included.</p> </td> </tr> <tr> <td> <p><b>Whole HDD</b> Copies all source data, bit by bit.</p> </td> </tr> <tr> <td> <p><b>Percentage (%)</b> Sets percentage of source capacity to copy.</p> </td> </tr> <tr> <td> <p><b>Deep Analysis</b> Analyze the data location and then copy. It doesn't have format limitation.</p> </td> </tr> </table>	<b>6.2 Copy Area</b>	<p><b>System and Files</b> Copies data and skips empty space. Only supports standard formats.</p>	<p><b>ALL Partitions</b> Copies all partitions and data, unallocated partitions not included.</p>	<p><b>Whole HDD</b> Copies all source data, bit by bit.</p>	<p><b>Percentage (%)</b> Sets percentage of source capacity to copy.</p>	<p><b>Deep Analysis</b> Analyze the data location and then copy. It doesn't have format limitation.</p>
	<b>6.2 Copy Area</b>		<p><b>System and Files</b> Copies data and skips empty space. Only supports standard formats.</p>				
			<p><b>ALL Partitions</b> Copies all partitions and data, unallocated partitions not included.</p>				
			<p><b>Whole HDD</b> Copies all source data, bit by bit.</p>				
			<p><b>Percentage (%)</b> Sets percentage of source capacity to copy.</p>				
		<p><b>Deep Analysis</b> Analyze the data location and then copy. It doesn't have format limitation.</p>					
	<p><b>6.3 Copy GPT Backup Area</b> Enable this function to copy the end GPT format.</p>						
	<p><b>6.4 Skip Bad Sectors</b> Skips bad sectors during Copy/Compare/Erase.</p>						
	<p><b>6.5 Minimum Speed</b> Allows user to disable or set minimum threshold speed during Copy/Compare/Erase.</p>						
<p><b>6.6 Check Source Minimum Speed</b> Allows user to enable or disable the 1<sup>st</sup> port speed check during Copy/Compare/Erase.</p>							

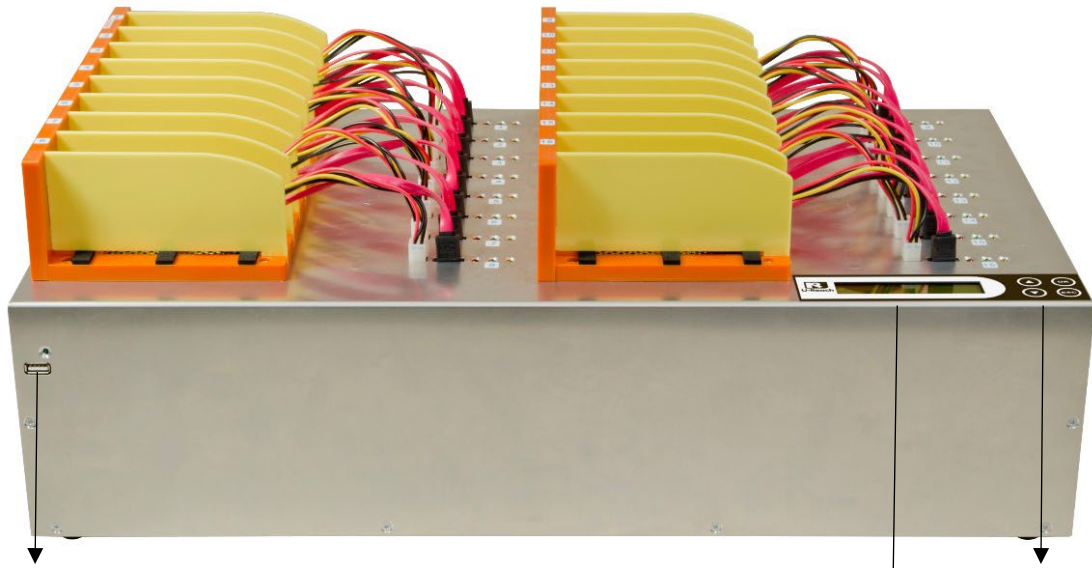
<b>6.7 Language</b> Sets preferred language.		
<b>6.8 Advanced Setup</b>	<b>6.8.1 Unknown Format</b> Allows user to copy or skip unknown format(s).	
	<b>6.8.2 Erase Master</b> Allows user to erase the source port or not.	
	<b>6.8.3 Erase Pattern</b> Sets whether to overwrite data in one-byte or Big random data.	
	<b>6.8.4 Skip Erase Errors</b> Skip bad sectors during erase.	
	<b>6.8.5 Wait HDD Time</b> Sets device power-up buffer time when tasks are initiated. Able to set from 5 to 99 seconds.	
	<b>6.8.6 Lock Key</b> After keys are locked, only "OK/ESC" buttons will function. (System reboot is required)	
	<b>6.8.7 HPA Copy Mode</b>	<b>Do Not Copy HPA</b> <b>Keep Target HPA</b> Does not copy HPA data, but keeps target device's original HPA setting.
		<b>Clear Target HPA</b> Does not copy HPA data and clears target device's HPA setting.
	<b>6.8.8 Clear HPA at ERASE</b>	<b>Setting Target HPA</b> Copies HPA setting from source device to target.
		<b>Copy and Setting</b> Copies HPA setting and data from source device to target.
<b>6.8.8 Clear HPA at ERASE</b>	<b>Clear HPA Setting</b> Clears HPA setting during erase.	
	<b>Keep HPA Setting</b> Keeps original HPA setting during erase.	
<b>6.8.9 Mark after ERASE</b> Creates watermark on the device(s) after erase job is		

		completed.				
		<p><b>6.8.10 Transfer Rate</b> Allows user to select from UDMA2 to UDMA7. The UDMA7 is the fastest.</p>				
		<p><b>6.8.11 Stop Motor Time</b> Sets device power down buffer time when tasks are completed.</p>				
		<p><b>6.8.12 Bytes Per Cmd</b> Set the size of the data transfer between the duplicator and the HDD. The setting value is form 512Byte to 16Mbyte.</p>				
		<table border="1"> <tr> <td></td> <td><b>No</b></td> </tr> <tr> <td><b>6.8.13 Delete Device Signature After Copy</b></td> <td><b>Yes</b></td> </tr> </table>		<b>No</b>	<b>6.8.13 Delete Device Signature After Copy</b>	<b>Yes</b>
	<b>No</b>					
<b>6.8.13 Delete Device Signature After Copy</b>	<b>Yes</b>					
		<p><b>6.9 Restore Defaults</b> Reinstates manufacturer settings.</p>				
<b>7. Log Manager</b>		<p><b>7.1 Out Today Report</b> Outputs today's log data.</p>				
		<p><b>7.2 Out Recent Report</b> Outputs recent log data.</p>				
		<p><b>7.3 Out Period Date</b> Outputs a set period of log data.</p>				
		<p><b>7.4.1 Clear ALL Log</b> Clears all log records.</p>				
		<p><b>7.4.2 Setup Password</b> Allows password change.</p>				
	<p><b>7.4 Advanced Function</b> Default password: 123456</p>	<p><b>7.4.3 Adjust Clock</b> Sets time and date.</p>				
		<p><b>7.4.4 Add Watermark at text File</b> Creates watermark on the log report.</p>				



# Hardware Overview

## Front View

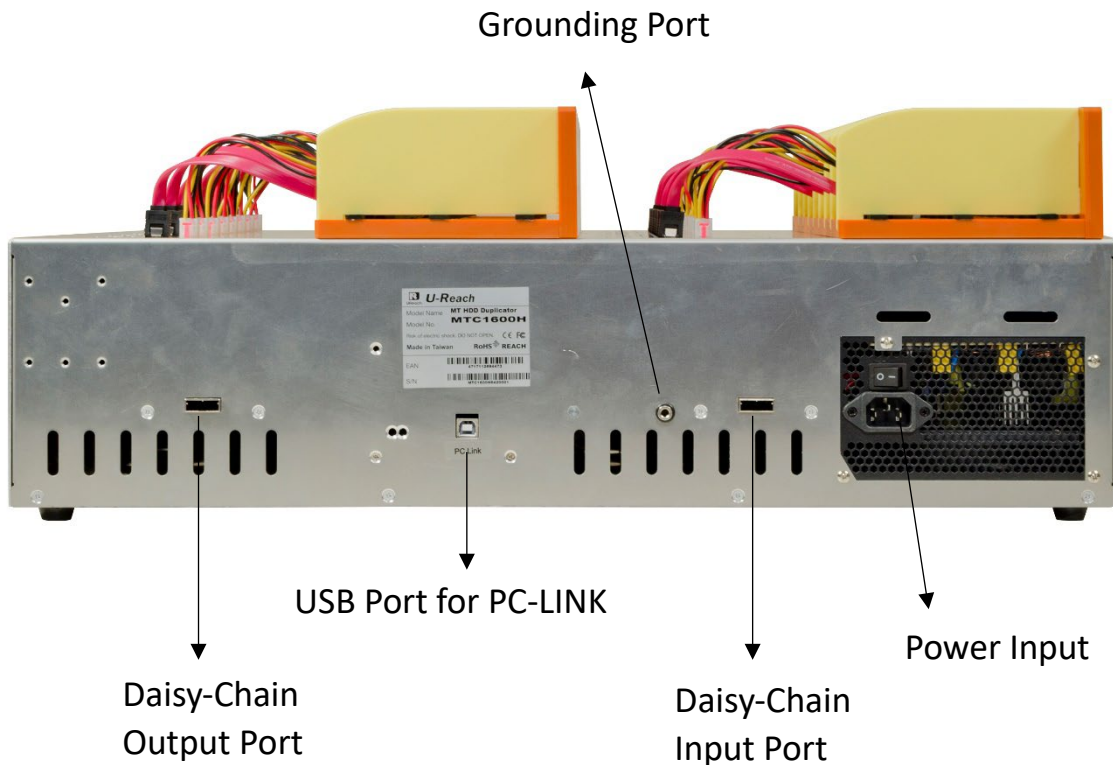


USB port for Log Report Outputs and Firmware Updates.

LCD Display

Control Buttons

## Back View



Grounding Port

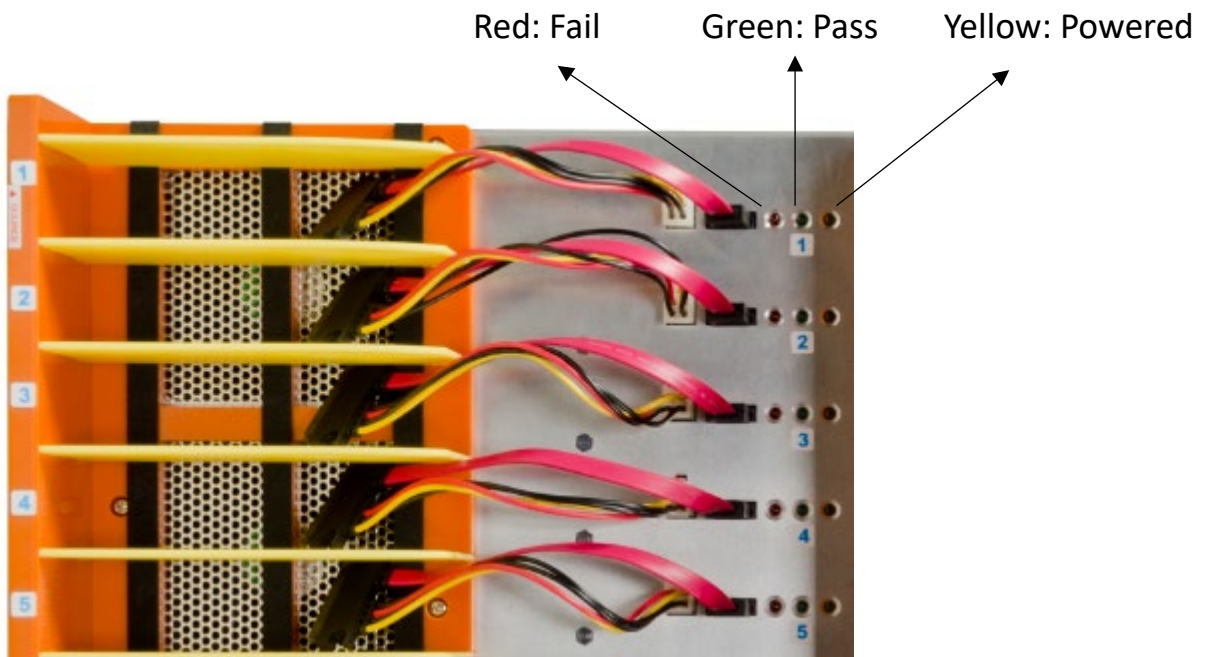
Daisy-Chain Output Port

USB Port for PC-LINK

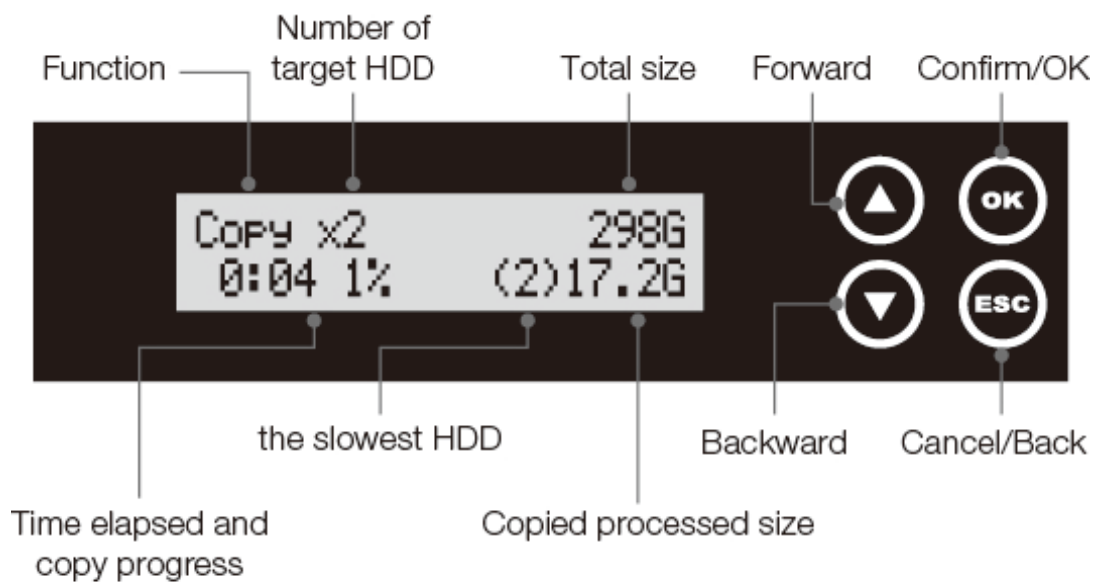
Daisy-Chain Input Port

Power Input

## LED Indicator

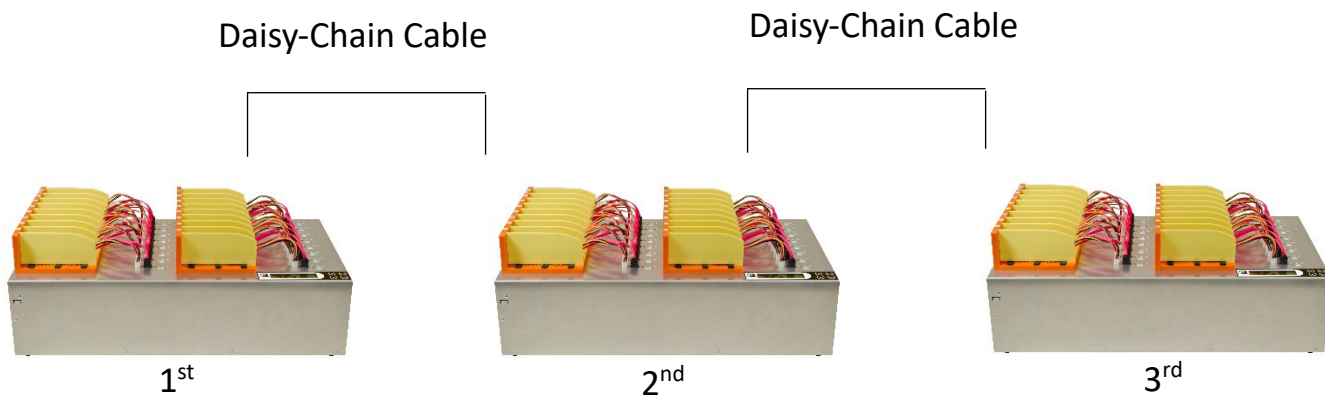


## LCD Configuration

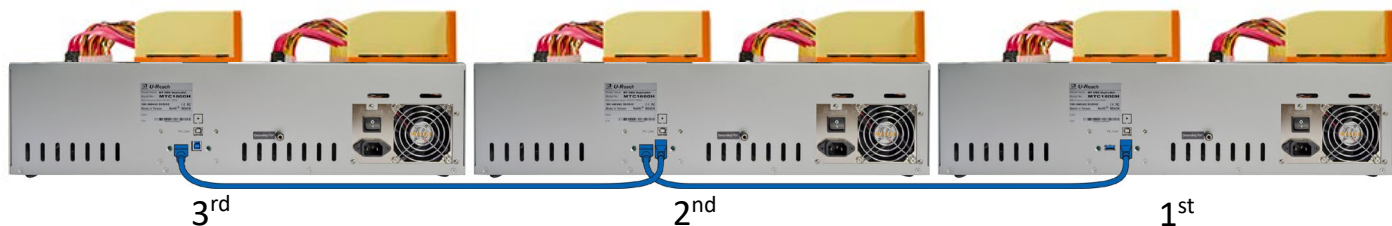


## Daisy-Chain Connection (Available in MTC Series)

### Front View



### Back View



#### Caution

If the connection is successful, the connected units will display “Networked Duplicator” on the LCD screen and will disable the control buttons.

# Functions

## 1. Copy

### Step 1: Prepare source and target devices.

**Note** Recommendation: Target device(s)' capacity must be equal to or larger than the source device capacity.

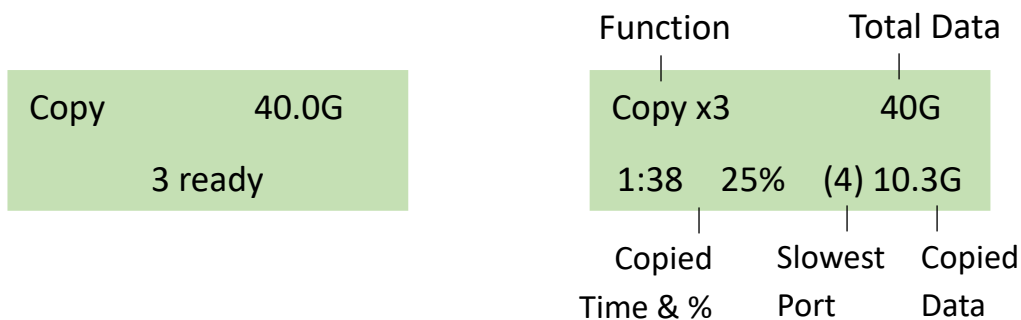
### Step 2: Connect source and target devices.

### Step 3: Proceed to copy.

Scroll to select "1. Copy", then press "OK" to start the duplication process.

**Note** The number of working/connected targets will be displayed on LCD. Press "OK" to start.

The information below states what is displayed on the LCD during duplication.



**Note**

- Press “▲▼” together for 5 seconds to stop operation on the slowest device.
- Press “ESC” for 5 seconds to stop all the copy jobs.

**Caution** It is recommended to reboot the machine after manually stopping the copy.

### Step 4: Copy Completed!

The quantity of passed or failed target device(s), the copied duration, and CRC64 will be displayed on the LCD after duplication completes.

```
Pass:3 Fail:0 8:00  
CRC:7073923CEBDF7B58
```

**Note** CRC64: During duplication, each port will simultaneously record written data and compare CRC64 between source and targets. The result will be conveyed with a green light (pass) or a red light (fail).

## 2. Compare

Proceed to verify device(s).

Scroll to select "2. Compare", then press "OK" to start the verification process.

### Note

The number of working/connected targets will be displayed on the LCD. Press "OK" to start.

## 3. Copy+Compare

Sequentially automates from Function 1, Copy to Function 2, Compare.

Scroll to select "3. Copy+Compare", then press "OK" to start the automated duplication and verification process.

### Caution

User is responsible for verification of targets' quality. Testing a few completed targets in a mass production environment for quality control is recommended.

## 4. Erase

### Caution

Please back up all important data before using this function.

### Step 1: Connect device(s) for sanitizing.

### Note

Source Port is disabled for erasing. Go to this function "Erase Master" to enable source port erasing.

### Step 2: Enter function "4. Erase"

Scroll to select "4. Erase", then press "OK" to view these erase modes.

- Press "▲" or "▼" to view real-time status of each port.
- Press "OK" to view the details of each port.

### Caution

User is responsible for verification of targets' quality. Testing a few completed targets in a mass production environment for quality control is recommended.

### 4.1 Quick Erase

This function will erase the index table from the connected device(s).

Scroll to select "Quick Erase", then press "OK" to start the erasing process.

## 4.2 Full Erase

This function will erase all data per NIST 800-88 Standards on the connected device(s). Scroll to select "Full Erase", then press "OK" to start the erasing process.

## 4.3 DoD Erase

This function will erase all data per DoD 5220.22-M Standards on the connected device(s). Scroll to select "DoD Erase", then press "OK" to start the erasing process.

## 4.4 DoD EraseComp

This function will erase all data per DoD 5220.22-M Standards, then compare erasure of the connected device(s). Scroll to select "DoD EraseComp", then press "OK" to start the erasing and verifying process.

## 4.5 7-Pass Erase

This function will erase device(s) 7 times complying with DoD 5220.22-M(ECE) Standards. Scroll to select "7-Pass Erase", then press "OK" to start the erasing process.

## 4.6 Secure Erase

This function erases the non-loadable areas complying with NIST 800-88 Standards. Scroll to select "Secure Erase ", then press "OK" to start the erasing process.

### Caution

If Secure Erase process is interrupted, the device will be locked. Please execute again and wait until it finishes.

## 4.7 Enhanced Secure Erase

This function erases devices that supports this feature. Scroll to select "Enhanced Secure Erase", then press "OK" to start the erasing process.

### Note

Although Secure Erase/ Enhanced Secure Erase is a command of the SATA-specification, not all SATA devices can support it. When a device that cannot be supported is encountered, the LCD will display Not Support!

## 4.8 US Army AR 380-19

This function will erase device(s) complying with Army Regulation 380-19 by the US Army. Scroll to select "US Army AR 380-19", then press "OK" to start the erasing process.

## 5. Utility

This menu contains submenus related to device information, system information and updates.

Scroll to "5. Utility", then press "OK" to view the submenus.

### 5.1 Show Device Info

This function will display basic information such as device model, name, capacity, etc....

Scroll to select "Show Device Info", then press "OK" to view the connected device(s). Then scroll through to view connected device(s) by port number order.

### 5.2 Update System

#### Step 1: Prepare a USB drive for update.

Connect a USB drive to a PC. Download the latest firmware provided by our technical support, unzip the BIOS firmware, then save it to the root directory in the USB drive.

**Note** The USB's format must be: FAT16 or FAT32.

#### Step 2: Proceed to update firmware.

Connect USB drive to the USB port in front of the duplicator. Scroll to select "Update System", then press "OK" to start the firmware update process.

**Caution** The firmware update process may take longer than 5 minutes. Please do not disrupt power or process during BIOS update. If interrupted, the system will become useless. We will not be held responsible for any damages.

### 5.3 System Info

This function will display basic information such as controller, model number, software version, etc.

Scroll to select "System Info", then press "OK" to view all information.

## **5.4 Verify HDD**

This function scans device for any bad sectors by reading and writing.

Scroll to select "Verify HDD", then press "OK" to initiate process. Then scroll through to view connected device(s) by port order.

## **5.5 Strict Verify HDD**

This function scans device for any bad sectors by reading and writing two times.

Scroll to select "Strict Verify HDD", then press "OK" to initiate process. Then scroll through to view connected device(s) by port order.



## 6. Setup

This menu contains submenus related to device information, system information and updates.

Scroll to select "6. Utility", then press "OK" to view the submenus.

### 6.1 Start-up Menu

This function allows user to select the default function to display during equipment initialization.

Scroll to select "6.1 Start-up Menu", then press "OK." Then scroll through the available menus for startup.

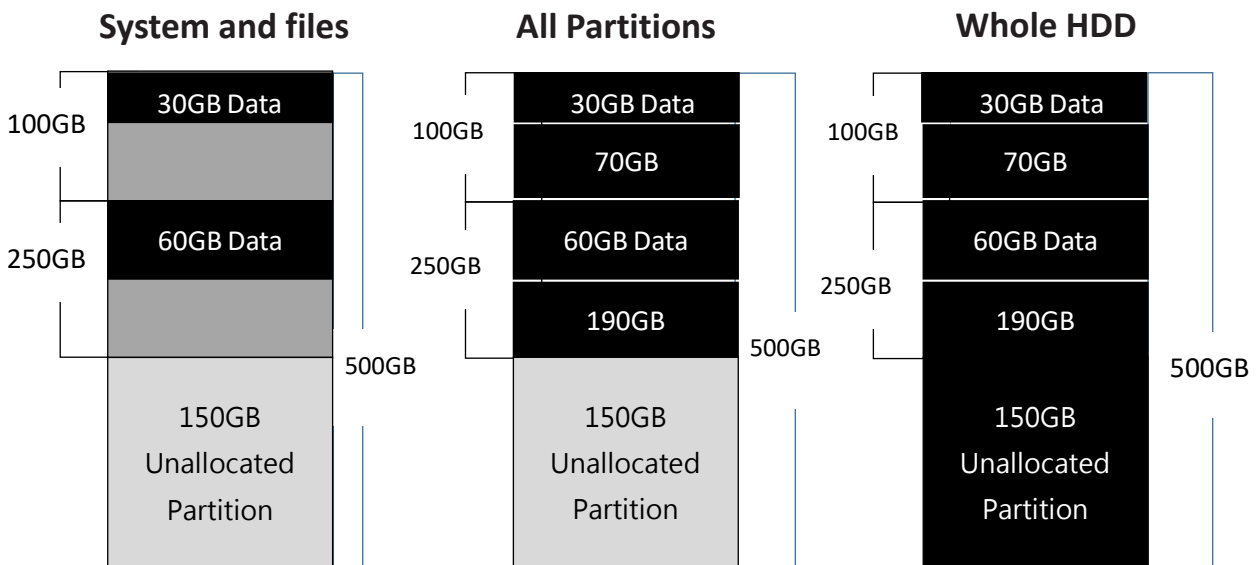
### 6.2 Copy Area

There are 5 submenu modes.

Scroll to select "6.2 Copy Area", then press "OK." Then scroll through to select one of the four copy methods.

- Selecting the Proper Copy Modes

Example: There are two defined partitions in a 500GB device. The charts below illustrate what portion would be duplicated.



This function will analyze and copy only data and skip empty spaces.

This function will copy all data within the defined partitions.

This function will copy the entire device.

- Copy and Compare Preparations

Please consider the following settings before proceeding with copy or compare:

- 6.2 Copy Area

- 6.4 Skip Bad Sectors
- 6.5 Minimum Speed
- 6.6 Check Source Minimum Speed
- 6.8.1 Unknown Format
- 6.8.7 HPA Copy Mode

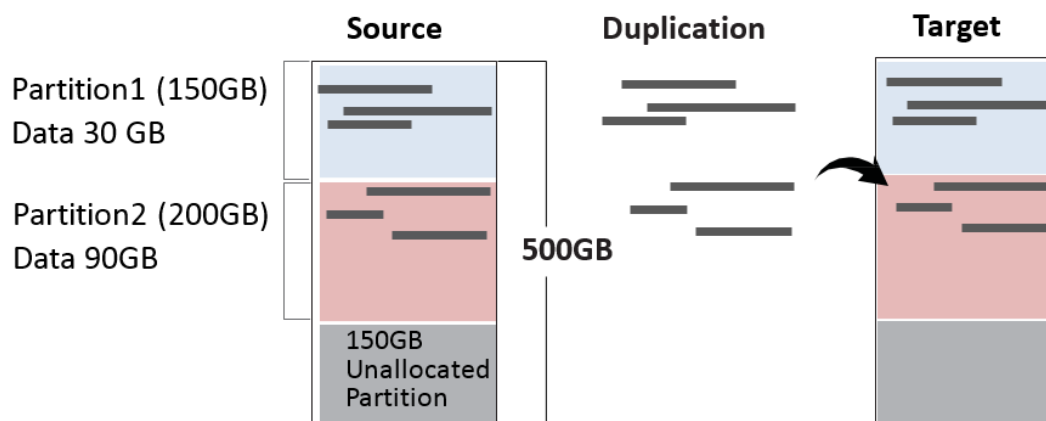
Using appropriate copy modes can greatly reduce operation time and increase efficiency. There are four copy modes with different copy methods.

## ① System and Files

Copies data and skips empty space. Only supports standard formats.

Scroll to select “6.2 Copy Area > System and Files”, then press “OK” to save the copy method.

Allows user to copy source device’s System and Files, instead of the entire device. The system will analyze the source device and identify the data area to copy. If the source device’s data is within the target device’s capacity, the copy will be processed. FAT16/32/64, NTFS, EXT2/EXT3/EXT4/lvm, and HFS/HFS+/HFSX are supported in this copy mode.

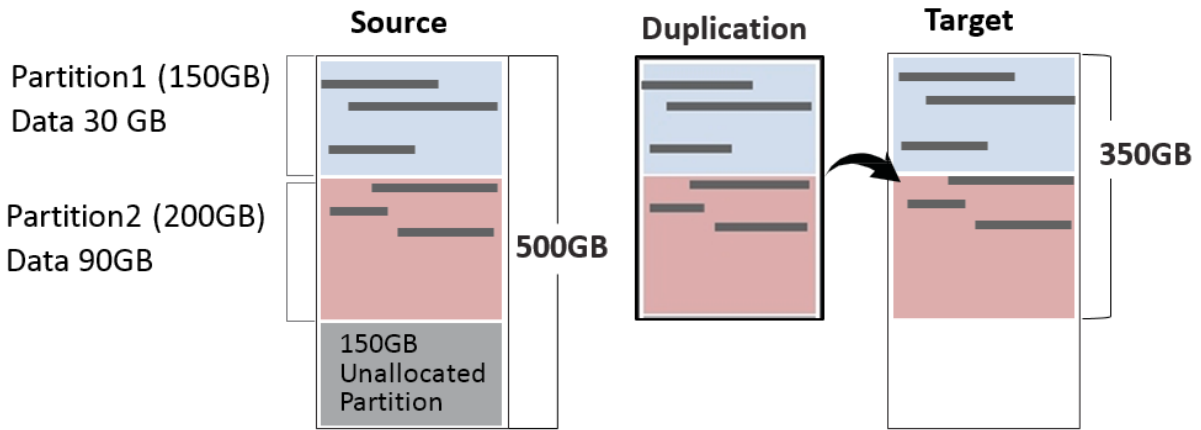


## ② All Partitions

Copy or skip HPA, DCO, unknown partitions, modified formats, etc. defined by settings.

Scroll to select “6.2 Copy Area > All Partitions”, then press “OK” to save the copy method.

The target device’s capacity must be equal to or larger than the source device’s capacity.



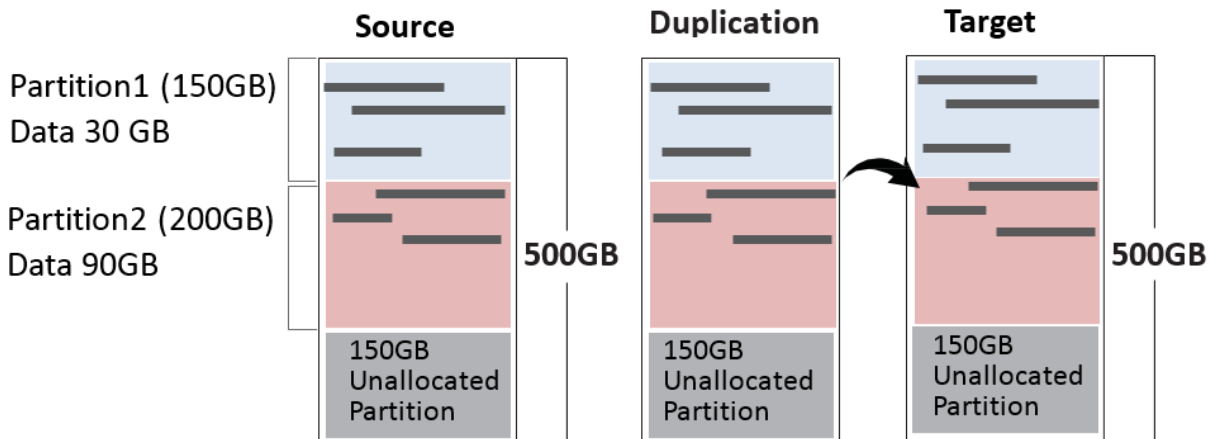
**350GB of all Partitions along with its contents will be copied.**

### ③ Whole HDD

Copies all source data, bit-by-bit.

Scroll to select “6.2 Copy Area > Whole HDD”, then press “OK” to save the copy method.

Copies the whole source device, irrespective of content, format, partition, or empty space. This mode does not analyze the data.

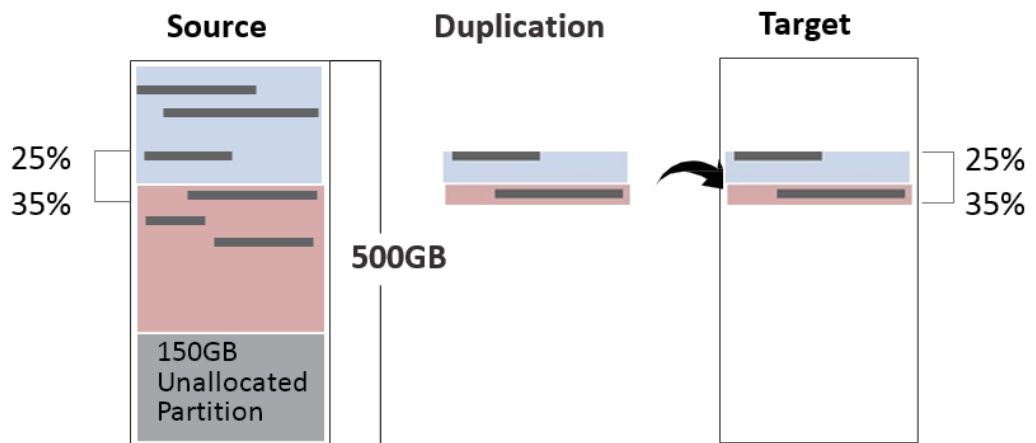


**All 500GB of data will be copied.**

### ④ Percentage (%)

Select percentage of source capacity to copy.

Scroll to select “6.2 Copy Area > Percentage”, then press “OK” to save the copy method.



**Only copies the selected area.**

## ⑤ Deep Analysis

This copy area is designed to handle special format devices. It analyzes the whole device and then copies the data area. The target device is required to be wholly cleaned prior to copy.

Scroll to select “6.2 Copy Area > Deep Analysis”, then press “OK” to save the copy method.

### Note

1. “Deep Analysis” copy mode needs to take time to analyze the whole device capacity prior to copying.
2. “Deep Analysis” is recommended for use with “8.1 Copy SSD to Image.”

### Caution

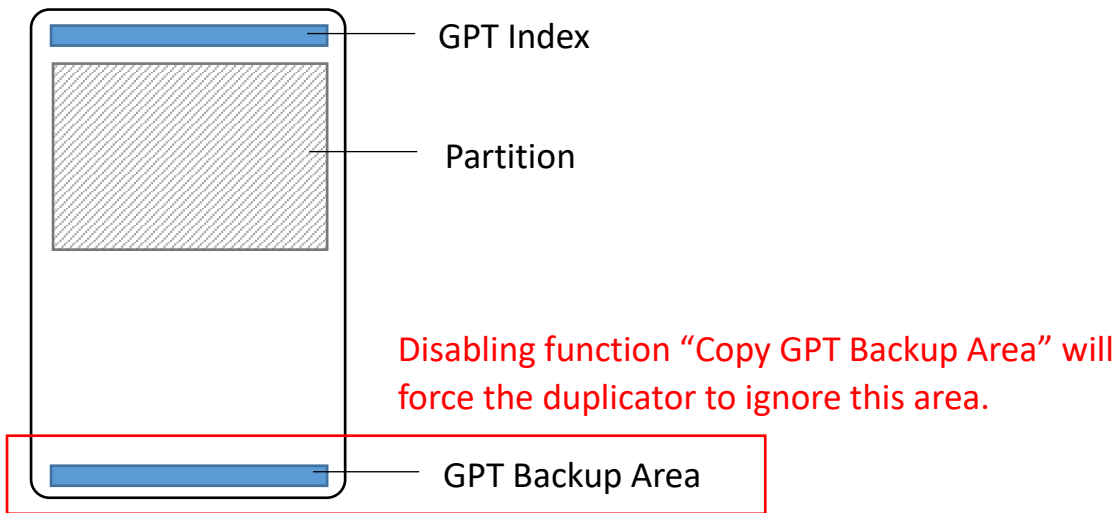
1. Use a clean source device to make the analyzed data capacity shorter. (Clean Source Device means no garbage data in the source device.)
2. The target device must be new or wholly cleaned prior to copy. Otherwise, there is risk for data combination.

## 6.3 Copy GPT Backup Area

Disabling this function allows the duplicator to copy from big capacity device to small capacity device(s).

### Note

The partition size of the source HDD must be smaller than target capacity.



### Caution

If function is disabled, the target HDD will reconstruct the GPT Backup Area by Windows system. It may require the HDD to restart in order to work.

## 6.4 Skip Bad Sectors

Skips bad sectors during Copy/ Compare/ Erase.

Scroll to select "Skip Bad Sectors", then press "OK" to scroll through the available values for skipping bad sectors. If the device data is critical and needs to be a full clone, it is recommended to set "Skip Error" at "0." Bad sectors can be set as unlimited or at a value from 0 to 65,535.

### Caution

The "Copy+Compare" function is advised for enhanced copy accuracy.

## 6.5 Minimum Speed

Allows user to disable or set minimum threshold speed during Copy/ Compare/ Erase.

Scroll to select "Minimum Speed", then press "OK" to set desired minimum threshold speed. The system will fail if any device does not achieve minimum speed. Users can choose "Don't Care" or set the speed value amongst 10/20/40/60~300MB/second.

## 6.6 Check Source Minimum Speed

Allows user to enable or disable the 1<sup>st</sup> port speed check during Copy/ Compare/ Erase.

Scroll to select "Check Source Minimum Speed", then press "OK" to enable or disable speed analysis of the source port. This setting will follow the threshold speed defined in function "Minimum Speed."

## 6.7 Language

Select English, Japanese, Spanish.

Scroll to select "Language", then press "OK." Then scroll through to select the desired language.

## 6.8 Advanced Setup

### 6.8.1 Unknown Format

This function only works with "6.2 Copy Area >> System and Files."

Scroll to select "Unknown Format", then press "OK".

Unknown format includes all forms of modified and proprietary data and partitions.

#### ① Copy Unknown

Copy unknown format(s).

Scroll to select "Unknown Format >> Copy Unknown", then press "OK" to save this setting.

#### ② Skip Unknown

Skip unknown format(s).

Scroll to select "Unknown Format >> Skip Unknown", then press "OK" to save this setting.

### 6.8.2 Erase Master

This function allows user to enable or disable the source port for sanitization.

Scroll to select "Erase Master", then press "OK." Then scroll through to select one of two settings.

#### ① Disabled

Devices connected to source port cannot be erased.

Scroll to select "Erase Master >> Disabled", then press "OK" to save this setting.

#### ② Enabled

Devices connected to source port can be erased.

Scroll to select "Erase Master >> Enabled", then press "OK" to save this setting.

### 6.8.3 Erase Pattern

Scroll to select "Erase Pattern", then press "OK". Then scroll through to select one of two settings.

#### ① One Byte

Random character written per byte.

Scroll to select "Erase Pattern >> One Byte", then press "OK" to save this setting.

## ② Big Random Data

Random character written in a set of area.

Scroll to select "Erase Pattern >> Big Random Data", then press "OK" to save this setting.

### 6.8.4 Skip Erase Errors

Skip source bad sectors during Erase. Bad sectors can be set as unlimited or at a value from 0 to 65,535.

Scroll to select "Skip Erase Errors", and press "OK" to scroll through the available values for skipping bad sectors.

### 6.8.5 Wait HDD Time

Sets device power up buffer time prior to copy, erase, etc...

Scroll to select "Wait HDD Time", then press "OK" to set buffer time from 5 to 99 seconds.

The default is 30 seconds.

### 6.8.6 Lock Key

This function allows users to enable or disable the 4 control panel buttons.

Scroll to select "Lock Key", then press "OK" to access available settings.

#### ① Disabled

Scroll to select "Disabled", then press "OK" to save this setting.

#### ② Enabled

Only down/up buttons are disabled. Reboot system for setting to be in effect.

Scroll to select "Enabled", then press "OK" to save this setting.

### 6.8.7 HPA Copy Mode

This menu contains submenus related to HPA Copy Modes

Scroll to select "HPA Copy Mode", then press "OK" to view the submenus. The default setting is: "Copy and Setting".

#### ① Do Not Copy HPA

This menu contains submenu settings from which users can select.

Scroll to select " HPA Copy Mode >> Do Not Copy HPA", then press "OK" view submenu settings.

##### ● Keep Target HPA

Does not copy HPA data but keeps target device 's original HPA setting.

Scroll to select "Keep Target HPA", then press "OK" to save this setting.

### ● **Clear Target HPA**

Does not copy HPA data and clears target device's HPA setting.

Scroll to select "Clear Target HPA", then press "OK" to save this setting.

## ② **Setting Target HPA**

Copies HPA setting from source device to target.

Scroll to select " HPA Copy Mode >> Setting Target HPA", then press "OK" to save this setting.

## ③ **Copy and Setting**

Copies HPA setting and data from source device to target.

Scroll to select " HPA Copy Mode >> Copy and Setting", then press "OK" to save this setting.

### **Caution**

HPA function "Copy and Setting" may change the original parameter of target devices. To reset it, user must set "Clear HPA at Erase >> Clear HPA Setting" and then execute "4. Erase."

## **6.8.8 Clear HPA at Erase**

Sets to clear HPA setting during erase.

Scroll to select "Clear HPA at Erase", then press "OK" to save this setting.

### ① **Clear HPA Setting**

Clears HPA setting and data during erase.

Scroll to select "Clear HPA at Erase >> Clear HPA Setting", then press "OK" to save this setting.

### ② **Keep HPA Setting**

Keeps original HPA setting and data during erase.

Scroll to select "Clear HPA at Erase >> Keep HPA Setting", then press "OK" to save this setting.

## **6.8.9 Mark After Erase**

Creates watermark on the device(s) after erase job is completed. This watermark will show when executing "Show Device Info."



### 6.8.10 Transfer Rate

Allows user to select the transfer rate.

Scroll to select "Transfer Rate", then press "OK". Select the desired transfer mode from UDMA2 to 7. The default is UDMA7.

### 6.8.11 Stop Motor Time

Sets device power down buffer time when tasks are completed.

Scroll to select "Stop Motor Time", then press "OK" to set buffer time from 1 to 20 seconds. The default is 3 seconds.

### 6.8.12 Bytes Per Cmd

Set the size of the data transfer between the duplicator and the HDD. The setting value is form 512Byte to 16Mbyte.

### 6.8.13 Delete Device Signature After Copy

Set at "Yes" means do not copy the disk signature part.

This function is for Windows only. Windows will only recognize one device if you connect two or more with the same disk signature.

#### Caution

"Compare" function will always Fail if "Delete Disk Signature After Copy" is set at "Yes."

## 6.9 Restore Defaults

Restores all settings back to manufacturer defaults.

Scroll to select "Restore Defaults", then press "OK" to restore settings back to manufacturer defaults.

# 7. Log Manager

This menu allows users to access several submenus.

Scroll to select "7. Log Manager", then press "OK" access submenus.

## I. Log Report Diagram

Print Date : 2016-03-09 13:35:33

Machine Model : HDD Dupe 1-15 (HD3464)  
 Machine Version : 2.36.0  
 Machine ID : 34640.13784.18562.64424.36864  
 Start No. Date : 2016-02-09  
 End No. Date : 2016-03-09

=====

Job: COPY

Time Start: 2016-02-24 13:12:24  
 End: 2016-02-24 13:16:05

Source HDD Model : HGST HTS725050A7E630  
 Version : GH20A420  
 Serial Number : TF0500WE00D93V  
 Capacity : 465.7GB(976773168 sectors)  
 Data Size : 23.6GB(49581335 sectors)

Source device

copy Area : System and Files  
 CRC-64-ECMA-182 : D2970AB76F250409

Copy Area and Check Sum

Quantity Total: 3  
 Pass: 3  
 Fail: 0

Result

[Pass Record]	Date	Time	Lapsed Time	Model No.	Revision
Port:02,	2016-02-24	13:12:24	( 221 seconds)	[HGST HTS725050A7E630]	[GH20A420]
Port:03,	2016-02-24	13:12:24	( 221 seconds)	[HGST HTS725050A7E630]	[GH20A420]
Port:04,	2016-02-24	13:12:24	( 220 seconds)	[HGST HTS725050A7E630]	[GH20A420]

Port No.

S/N	Capacity (Sectors)	Write Speed	Power-on Hours	Power Cycle
[TF0500WE0083GV	] 465.7GB(976773168)	[Write Speed=113.6MB/second]	[power_on_hours=95, power_cycle=1387]	
[TF0500WE007XZV	] 465.7GB(976773168)	[Write Speed=113.6MB/second]		
[TF0501WE01PM5Z	] 465.7GB(976773168)	[Write Speed=114.1MB/second]	[power_on_hours=140, power_cycle=2614]	

## II. How to Export Log Reports

The Log Report Management Tool assists users with monitoring, recording, and managing the entire duplication process. By displaying detailed information for each port, this tool helps to identify the slowest writing device that in turn, keeps the operation running efficiently.

Note

1. The USB must be FAT16/FAT32 format.
2. The LCD will display the number of recorded logs.  
(E.g. #1-#6 means there are 6 logs.)
3. Outputs both .txt and .csv files.

### ❶ Export Today's Log Report

Export today's log report via USB port to a USB drive.

### ❷ Export Recent Log Report

Exports a recent log report (1-28 days) via USB port to a USB drive.

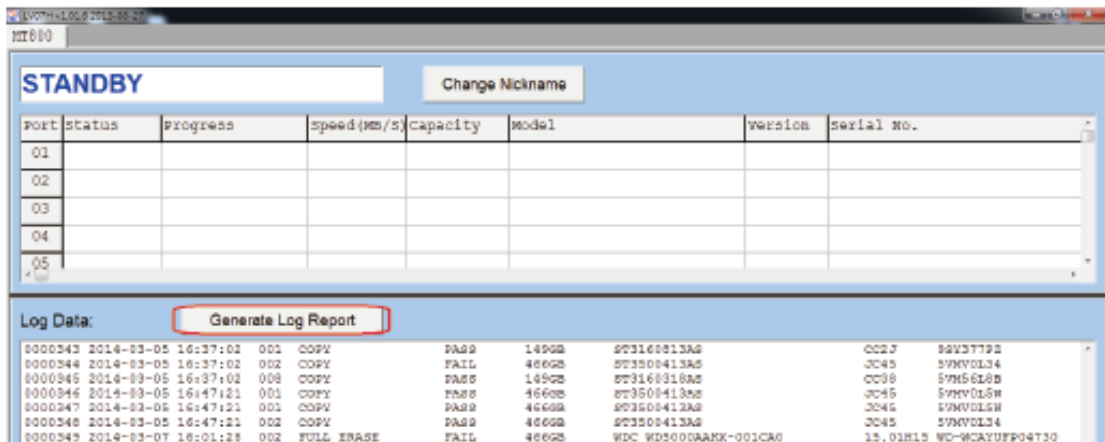
### ❸ Export Custom Log Report

Exports a specific time period's log report via USB port to a USB drive.

## III. Output Log Reports through LV07H Program.

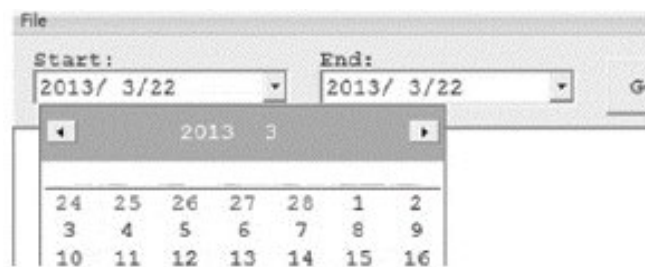
After finishing all tasks, press <ESC> key, the LV07H status will return to STANDBY.

**Step 1: Click <Generate Log Report> in the field of LV07H screen <Log Data>.**



### Step 2: Select Date Range.

After entering <Open Report>, select the date range for log report.



### Step 3: Generate Report.

After selecting the date range, click <Generate Report> to generate log report. The duplicator can record up to 30,000 records of operational information off the device. Each device operation is saved as one record. For example, 26 records will be recorded if data is copied from 1 device to 25 devices.

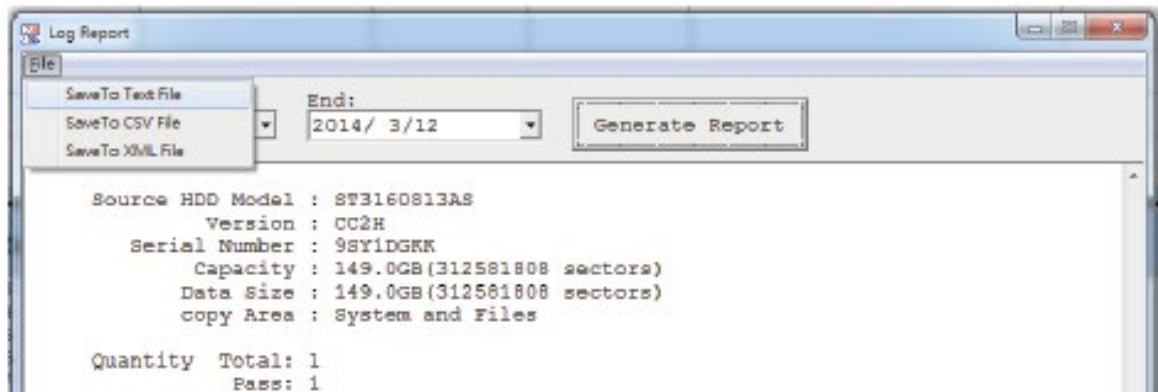
Log Data:		Generate Log Report				
0000343	2014-03-05 16:37:02	001	COPY	PASS	149GB	ST3160813AS
0000344	2014-03-05 16:37:02	002	COPY	FAIL	466GB	ST3500413AS
0000345	2014-03-05 16:37:02	008	COPY	PASS	149GB	ST3160318AS
0000346	2014-03-05 16:47:21	001	COPY	PASS	466GB	ST3500413AS
0000347	2014-03-05 16:47:21	001	COPY	PASS	466GB	ST3500413AS
0000348	2014-03-05 16:47:21	002	COPY	PASS	466GB	ST3500413AS
0000349	2014-03-07 16:01:28	002	FULL ERASE	FAIL	466GB	NDC WD5000AAKX-001CA0
0000350	2014-03-10 10:36:56	001	COPY	PASS	466GB	ST9500325AS
0000351	2014-03-10 10:36:56	001	COPY	PASS	466GB	ST9500325AS
0000352	2014-03-10 10:36:56	003	COPY	PASS	466GB	ST3500413AS

**Note**

If there is no record saved on the selected date, or record has been wiped out, the program would show "No match records!"

**Step 4: Save Log as Text File.**

At the top-left of Log Data screen, select <File> then <Save to Text File>.

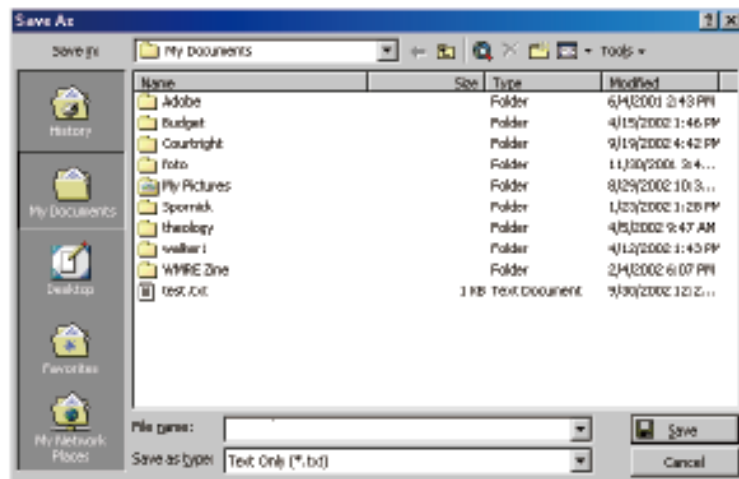


**Note**

There are 4 files types to choose from when saving a Log Report: .txt, .csv, .xml, or .pdf.

**Step 5: Save Log to the Specific Location.**

Specify a name and location to save the log.



### **Step 6: To Complete Output Log Reports.**

After successfully creating and saving the log, the report will be in the folder in which it was saved.


#### **Caution**

30,000 logs can be saved at one time. One device record is equal to one recorded log.  
(E.g. duplication from 1 device to 21 devices will be recorded to 21 logs.)

# Real time PC-Monitoring

Real time PC-Monitoring is a convenient tool to monitor real-time status of each working port, such as duplication progress, testing results, and operation log. These can all be viewed on your computer screen.

How to Launch PC-Monitoring:

**Step 1:** Copy “LV07H”  to your PC.

**Step 2:** Connect USB cable from computer to the duplicator.



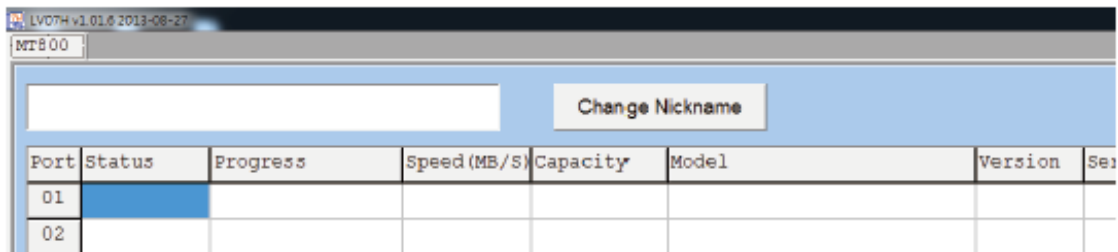
**Step 3:** Power On the duplicator.

**Step 4:** Launch LV07H by double clicking on software icon "LV07H" .

**Caution**

1. Before Step 4, make sure the duplicator has completed boot-up.
2. There are configuration files when launching LV07H. Make sure you are launching the .exe file on the PC, and not with the provided U-Reach mini-CD software.

**Step 5:** When the below screen is shown, the duplicator has linked to the computer successfully and is ready to use real-time monitoring function.



**Step 6:** If the screen above does not appear, please repeat steps 1 thru 4.

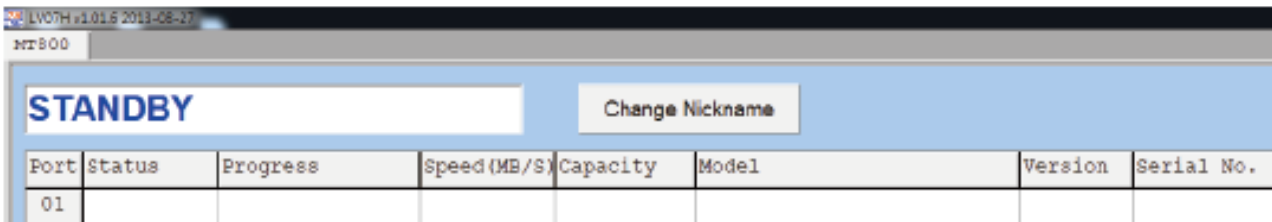
**Note**

If the system requests “Run the program as an Administrator”, right click “LV07H”, then set it in “Properties” > “Compatibility”.

# Using the PC-Monitoring Feature

**Note** Please select only one computer to do all PC-Monitoring. This will prevent PC from operating other tasks simultaneously as PC-Monitoring information can rapidly synchronize.

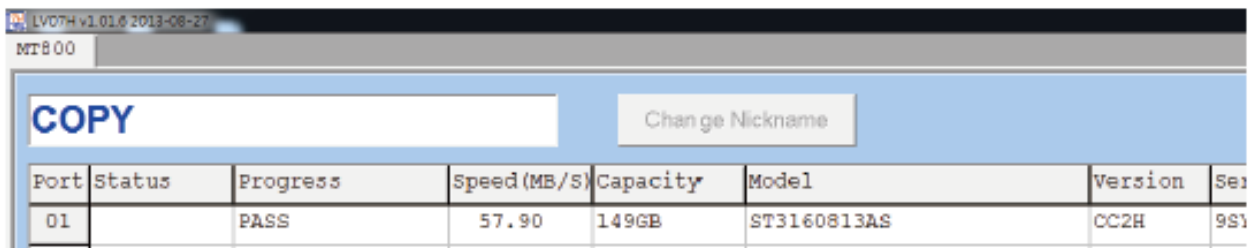
**Step 1: When duplicator status indicates it's online, open the monitoring screen. The program is ready to work when the status displays "STANDBY".**



**Step 2: Execute a "Copy/Compare" on the duplicator.**

After connecting source & target devices to the duplicator and executing a task, the program will display all related device information. It captures detailed information from each device via PC-Monitoring, e.g. device model, S/N, copy speed, etc. It also records all operational progress.

**Note** Copy speed varies during operation.



Copy Status	Copy Speed	HDD Capacity	HDD Model	FW version	HDD S/N
Progress	Speed (MB/S)	Capacity	Model	Version	Serial No.
PASS	57.90	149GB	ST3160813AS	CC2H	9SY1DGKX
PASS	192.47	466GB	ST3500413AS	JC45	5VMTRMPP

**Step 3: After duplication, the program will display the average speed of each device.**

Port	Status	Progress	Speed (MB/S)	Capacity	Model	Version
01		PASS	57.90	149GB	ST3160813AS	CC2H
02						

## 7.1 Out Today Report

Outputs current day log report

Scroll to select "Out Today Report", then press "OK" to output log report to a USB drive.

## 7.2 Out Recent Report

Outputs recent log report

Scroll to select "Out Recent Report", then press "OK" to output log report to a USB drive.

## 7.3 Out Period Report

Outputs recent log report

Scroll to select "Out Period Report", then press "OK" to output log report to a USB drive.

## 7.4 Advanced Function

This menu allows user to access several submenus.

Scroll to select "Advanced Function", then press "OK" access submenus.

Default password: 123456

### 7.4.1 Clear All Log

Clear all log records.

Scroll to select "Clear All logs", then press "OK" to clear all log records.

#### Caution

Before using function "Clear ALL Log" when connected to PC, please observe the following steps:

1. Close the PC-Link software (LV07) or 2. Disconnect the duplicator from PC

\*The PC-Link software (LV07) is designed to continuously record log reports. If user executes "clear log records" on the duplicator while LV07 is still running, the conflict between LV07 and duplicator might lead a serious system error.



## 7.4.2 Password Setup

Allows password change.

Scroll to select "Password Setup", then press "OK" to change to desired password.

**Note** If you want to change your Log password, please keep your password in a safe place in case you lose it. Please understand that the manufacturer does not provide password reset service due to the consideration of personal privacy.

## 7.4.3 Adjust Clock

Change time and date.

Scroll to select "Adjust Time/Date", then press "OK" to adjust the time and date.

## 7.4.4 Add Watermark at text File

Creates a watermark on the log report. The log report can be checked by software (iSecuLog.exe) to prevent modifying.

**Note** Contact our technical team for details.

***Specifications are subject to change without notice.***